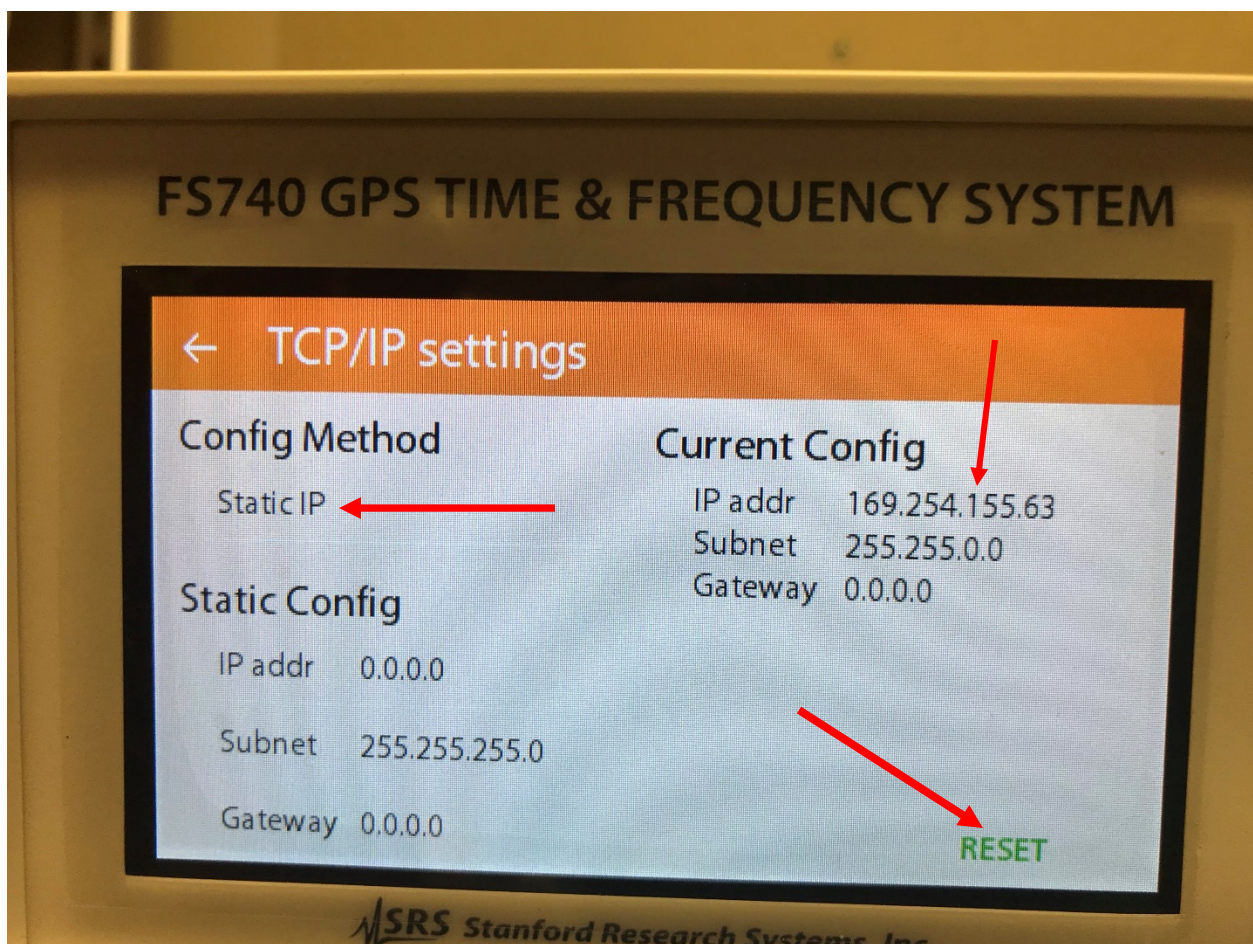




### Procedure to communicate with the FS740 using a USB to Ethernet adapter

The procedure outlined uses a Plugable USB to Ethernet adapter.

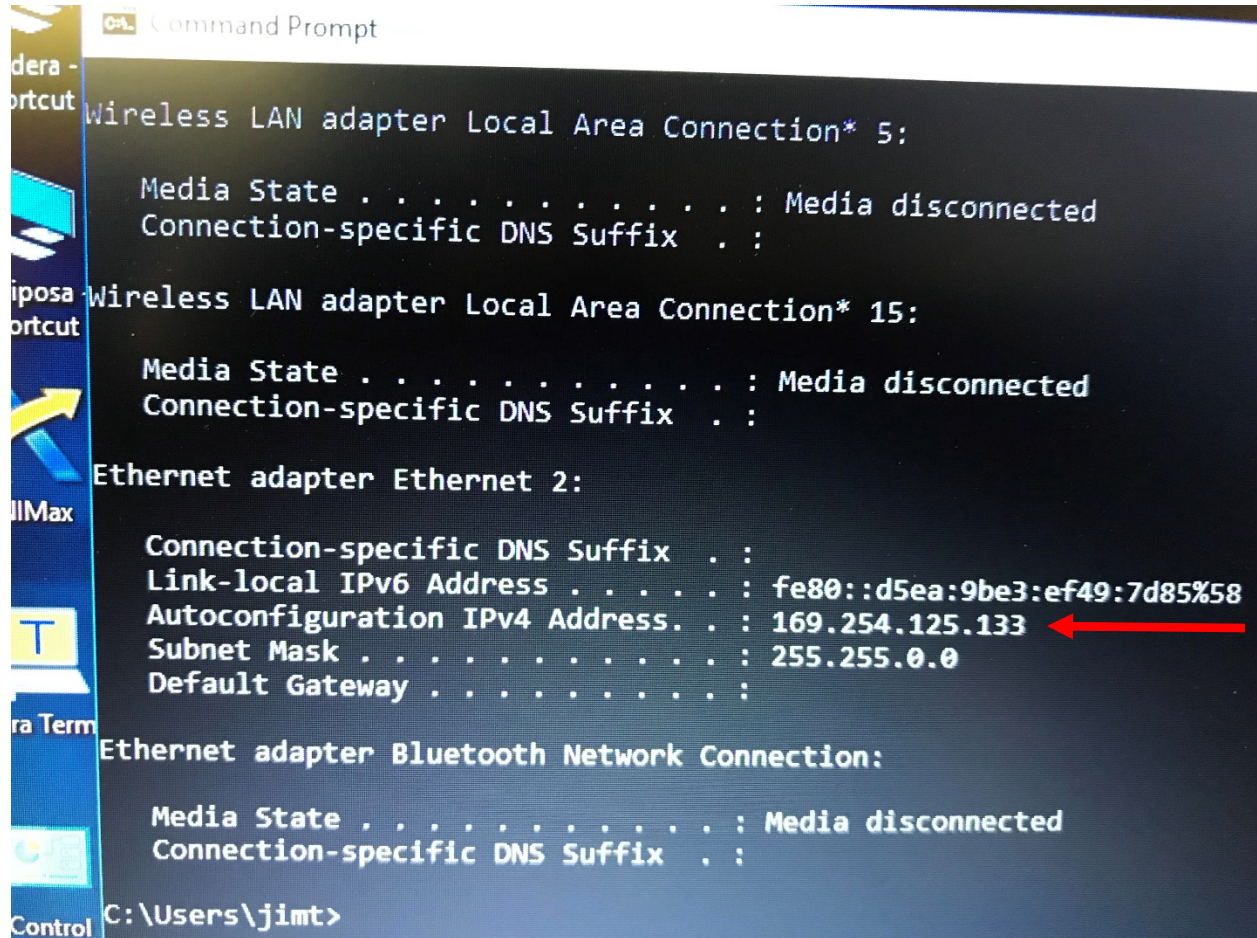
1. Attach the usb/ethernet device to your computer USB port.
2. Let windows find the drivers, or download and install drivers.
4. Attach a Cat 5 or Cat 6 cable from the adapter to the FS740 Ethernet port.
5. On the FS740 push the button in the **Com** section to bring up the communication menu.
6. On the touchscreen tap on TCP/IP and under Config Method choose Static IP .  
A window will pop up telling you to set the ip address to 0.0.0.0 (should already be set to 0.0.0.0). After the window disappears push the reset button.



After the reset wait about 30 seconds the IP addr will appear in the display

7. Open up **Command Prompt**

8. Type *ipconfig*. Find the adapter associated with the USB adapter (if you're not certain which one is for the usb then unplug the adapter, run ipconfig again and find out which one disappeared, then plug it back in and run ipconfig again).



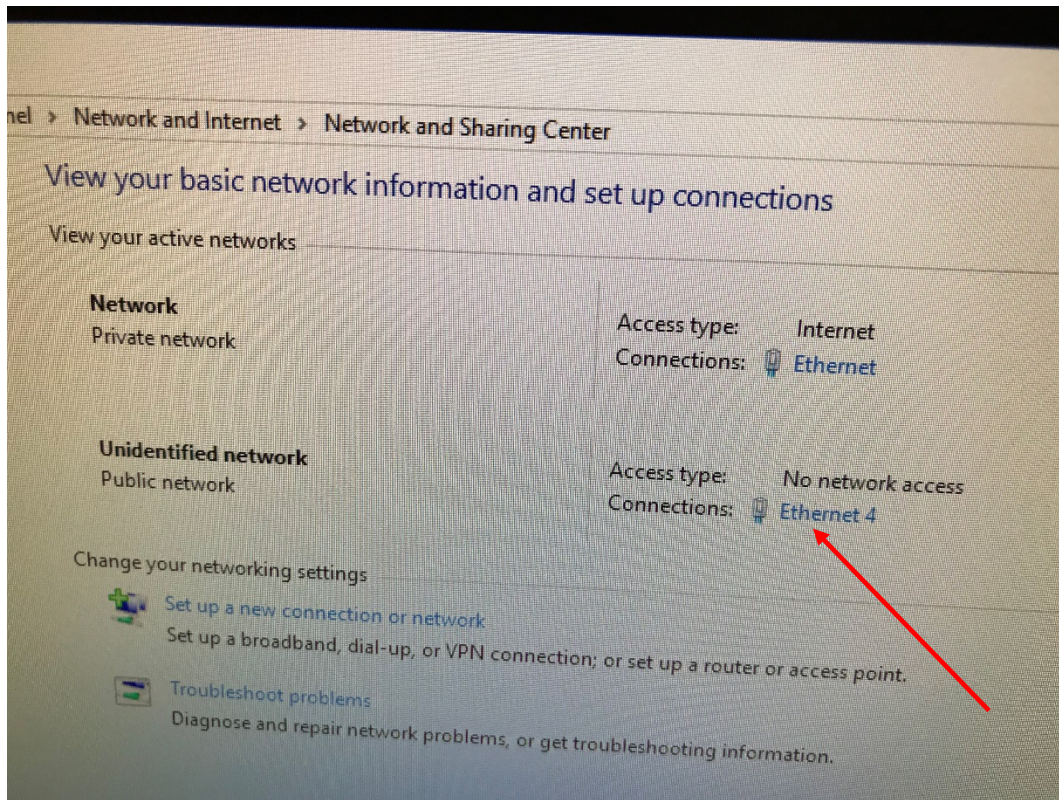
```
Command Prompt
Wireless LAN adapter Local Area Connection* 5:
    Media State . . . . . : Media disconnected
    Connection-specific DNS Suffix  . :
Wireless LAN adapter Local Area Connection* 15:
    Media State . . . . . : Media disconnected
    Connection-specific DNS Suffix  . :
Ethernet adapter Ethernet 2:
    Connection-specific DNS Suffix  . :
    Link-local IPv6 Address . . . . . : fe80::d5ea:9be3:ef49:7d85%58
    Autoconfiguration IPv4 Address. . : 169.254.125.133
    Subnet Mask . . . . . : 255.255.0.0
    Default Gateway . . . . . :
Ethernet adapter Bluetooth Network Connection:
    Media State . . . . . : Media disconnected
    Connection-specific DNS Suffix  . :
C:\Users\jimt>
```

The IP address of this USB adapter is 169.254.125.133. the subnet mask is 255.255.0.0. This means you can use any address for the FS740 that is between 169.254.000.000 and 169.254.999.999 except 169.254.125.133 (the adaptor address)

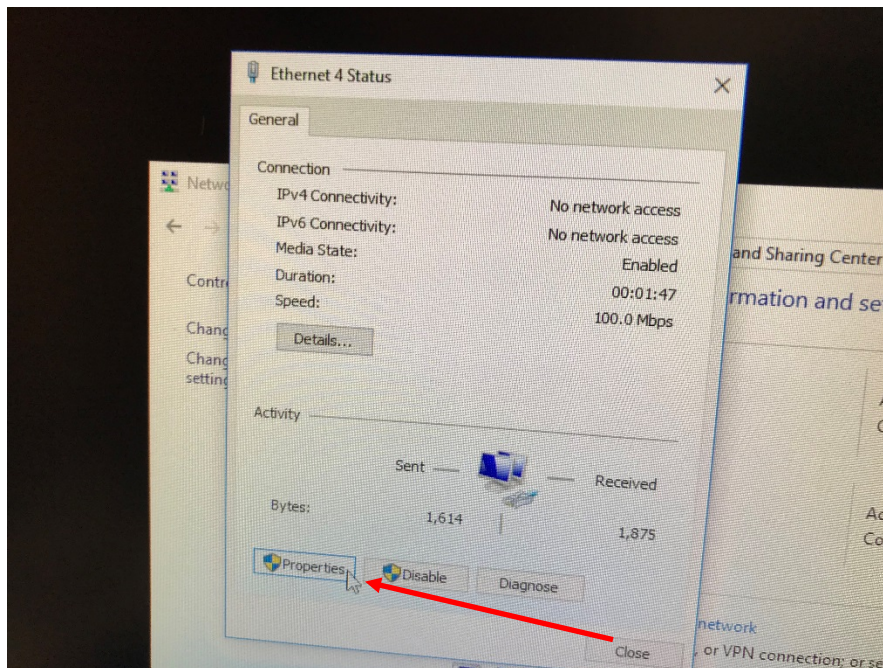
The FS740 address is 169.254.155.63 which is allowable.

If the address does not line up (is not a 169.254.xxx.xxx) then it's probably easier to change the address in the FS740 using a Static Ip address. Make certain that it's a private address (ie 192 or 169) or some Russian guy will hack into your FS740.

If you need to change the USB adapters ip address then go to Control Panel, Networks and sharing. Find the adapter (the ethernet cable has to be attached to the FS740 and the instrument must be on).

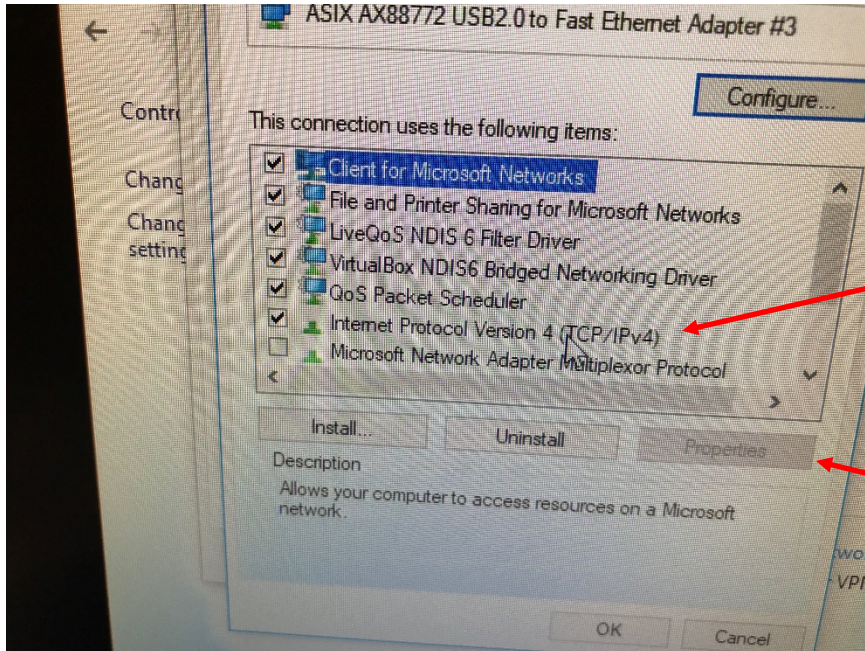


Click on the blue Ethernet adapter to bring up status window:

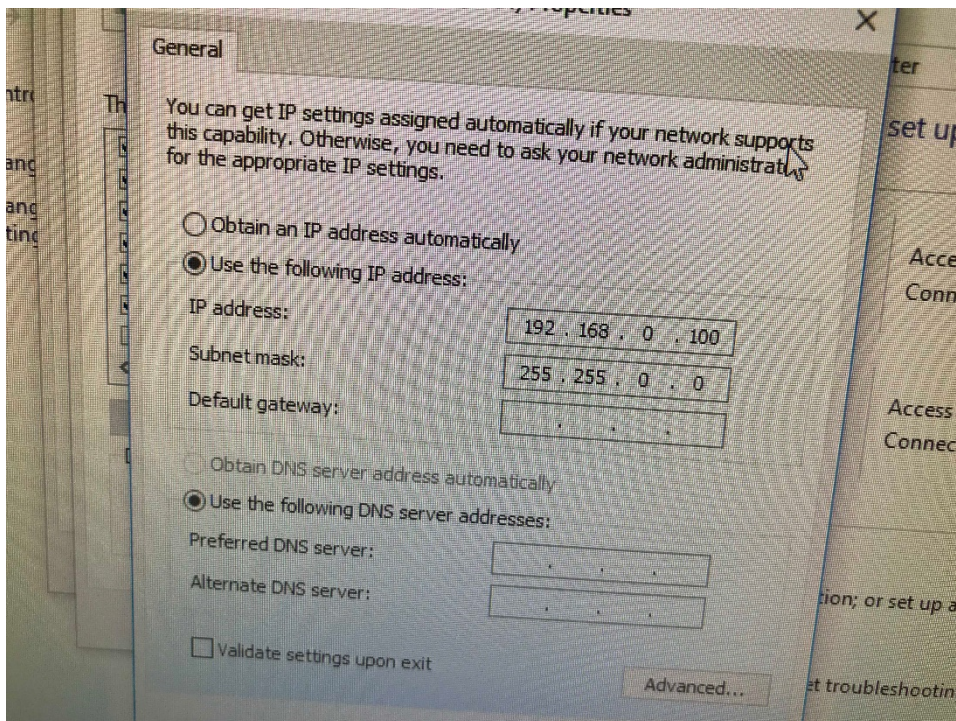


Click on properties (this takes awhile - maybe 45 seconds).

Highlight IPv4 then click on properties



Type in the IP address that you wish to use: Make the subnet mask 255.255.0.0



Save the settings and get out of control panel.

Then go back to Command Prompt and type ipconfig to make certain that your address is correct.

To communicate from Command Prompt with the instrument type:

*telnet 169.254.155.63 5024* (telnet is the program; 169.254.155.63 is the address of the FS740; 5024 is the port number). You must always use a port number at the end. The port number for the FS740 is 5024.

Telnet should connect to the FS740. For some reason Windows 10 turns off telnet by default. If telnet is not available, type *Telnet* in the search window of Windows 10 and follow instructions then run telnet again.